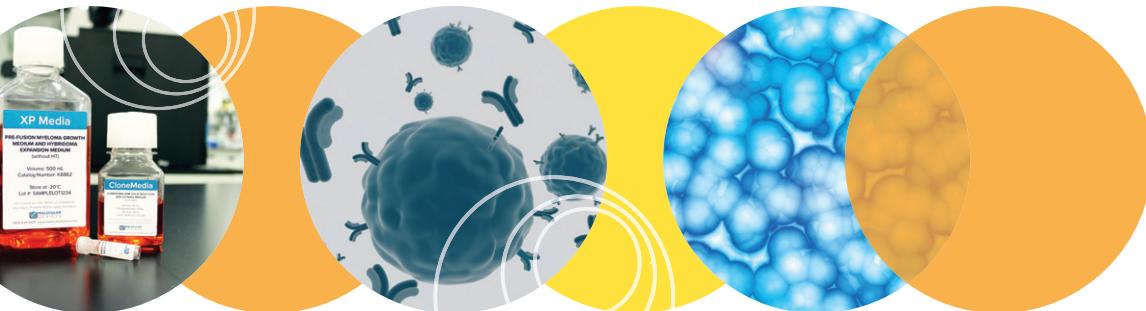


Reagents and supplies



Advance your bioproduct research and development



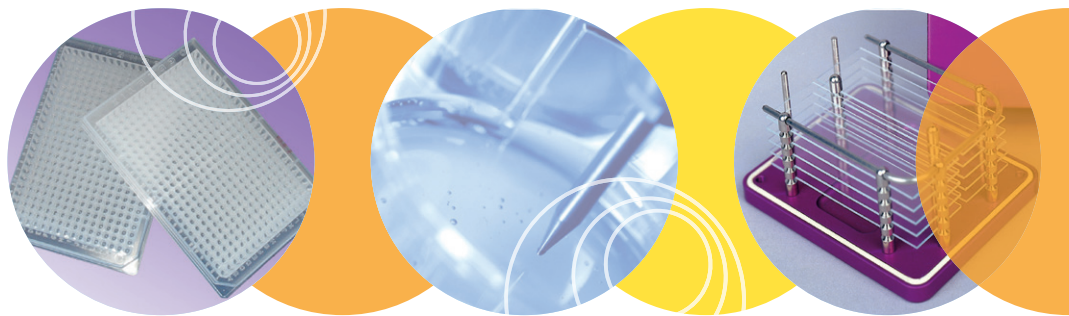


Table of contents

Introduction.....	4	06 Deep well plates and lids	13
01 Cell biology reagents	5	• Deep well plates.....	13
• XP Media and CloneMedia Complete Kit for Mouse Hybridoma Generation	5	• Cap mats and lids.....	13
• CloneMedia	5	07 Adhesive and heat seals	14
• CloneMatrix	6	• Breathe seal	14
• Recombinant CloneDetect	7	• Foil seal for microplates	14
• Adherent cell picking reagent.....	8	• Heat sealing film and rolls	14
• Cell-based assay kits.....	8	• ELISA Seal.....	14
• Cleaning and sterilizing solutions	8	08 Replicators and filters	15
• Calibeads	8	• QReps polypropylene replicators	15
02 QPix™ Chroma Filters.....	9	• Filters and filter paper	15
• QPix™ Chroma Filters	9	09 DNA sequencing reagents.....	16
• QPix™ Chroma Colorimetric Colony Selection Software Kit.....	9	• HalfSEQ DNA sequencing dilution reagents	16
03 Adjustable petri dish and microplate holders	10	• genCLEAN dye terminator clean-up kits	16
04 Bioassay trays.....	11	10 Microarraying.....	17
05 Microplates	12	• 384-well microarray plates	17
• Low profile microplates	12	• TeleChem ArrayIt® Stealth pins and accessories	17
• Standard profile microplates.....	12	• Glass slides.....	18
• 384-well high sample recovery plate.....	12	• Microarraying accessories.....	18
		11 Accessories.....	19

Introduction

Unrivalled automation solutions for imaging and picking of cells

Products from Molecular Devices® offer scientists unrivalled solutions that utilize imaging and intelligent image analysis to support basic research, pharmaceutical and biotherapeutic development. The company's systems continue to establish industry standards in areas such as picking microbial colonies for genomic studies or screening and selection of mammalian cell lines.

Other systems use imaging platforms to monitor cell growth, evaluate cellular responses and quantify protein production. Through its expertise in robotics, cell and molecular biology, image analysis and interpretation, supported by a strong IP portfolio, the company is committed to the continual development of innovative solutions for life science applications. For more information, visit www.moleculardevices.com/genetix.



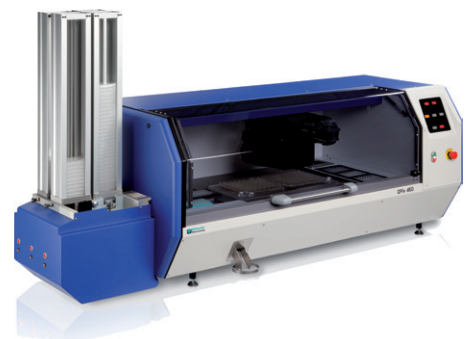
ClonePix™ systems

Screening and selection of mammalian clones



CloneSelect™ Imager

Objective, quantitative assessment of cell growth



QPix systems

Sets the industry standard in accurate colony picking

Cell biology reagents

01



XP Media and CloneMedia Complete Kit for Mouse Hybridoma Generation

Product name and description	Quantity/pack size	Part number	Compatibility
Component			
XP Media Pre-Fusion Myeloma Growth Medium and Hybridoma Expansion Medium (without HT)	1 x 500 mL	K8862	ClonePix or other platforms
XP Media Hybridoma Fusion Medium	1 x 500 mL	K8863	
XP Media Hybridoma Fusion Recovery Medium	1 x 100 mL	K8864	
CloneMedia Hybridoma Semi-Solid Selection and Cloning Medium (with HAT)	1 x 90 mL	K8865	
XP Media Hybridoma Growth Medium (with HT)	1 x 500 mL	K8866	
CloneMedia Hybridoma Semi-Solid Selection and Cloning Medium (without HAT)	1 x 90 mL	K8867	
Hybridoma Polyethylene Glycol (PEG) for Cell Fusion	1 x 1.5 mL	K8868	
Kit information			
XP Media and CloneMedia Complete Kit for Mouse Hybridoma Generation	1 Kit containing 1 each of the following part numbers: K8862, K8863, K8864, K8865, K8866, K8868	K8861	

CloneMedia

Complete semi-solid media for growth and isolation of mammalian cell colonies. CloneMedia ensures formation of discrete, clonal colonies with hybridoma, CHO and other cell lines. No material of animal origin is used in the manufacture of K8680-K8775. CloneMedia for hybridomas contain calf serum. Final volume 100 mL.

Product name and description	Quantity/pack size	Part number	Compatibility
CloneMedia-HEK (semi-solid media for HEK cells)	6 x 90 mL	K8680	ClonePix
CloneMedia-HEK (semi-solid media for HEK cells)	1 x 90 mL	K8685	
CloneMedia-CHOK1SV (semi-solid media for CHOK1SV cells, glutamine free)	6 x 90 mL	K8720	
CloneMedia-CHOK1SV (semi-solid media for CHOK1SV cells, glutamine free)	1 x 90 mL	K8725	

01 Cell biology reagents

CHO Growth A

The CHO Growth A liquid and semi-solid media portfolio provides a fast, simple, and comprehensive solution for CHO cell line development. Optimized for recombinant protein production. Chemically defined and free of animal components.

Product name and description	Quantity/pack size	Part number	Compatibility
CloneMedia CHO Growth A with L-Gln	6 × 90 mL	K8800	ClonePix
CloneMedia CHO Growth A with L-Gln	1 × 90 mL	K8810	
CloneMedia CHO Growth A without L-Gln	6 × 90 mL	K8830	
CloneMedia CHO Growth A without L-Gln	1 × 90 mL	K8840	
XP Media CHO Growth A without L-Gln	1000 mL	K8860	

CloneMatrix

A 2.5x concentrate that serves as a matrix to produce semi-solid media. Proven for hybridoma, myeloma, CHO, HEK and mESC. Supplied ready to dilute in 100 mL bottles for convenience.

Product name and description	Quantity/pack size	Part number	Compatibility
CloneMatrix, makes 6 × 100 mL final media volume	6 × 40 mL	K8500	ClonePix
CloneMatrix, makes 100 mL final media volume	1 × 40 mL	K8510	
CloneMatrix: optimized for CHO cells, makes 6 × 100 mL final media volume	6 × 40 mL	K8520	
CloneXL reagent: converts CloneMatrix to CloneMatrix-CHO	5 × 2 mL	K8525	
CloneMatrix: optimized for CHO cells, makes 100 mL final media volume	1 × 40 mL	K8530	

Recombinant CloneDetect

Newest detection agent free of raw materials of animal origin for visualizing secreted antibodies.

Product name and description	Quantity/pack size	Part number	Compatibility
CloneDetect Human IgG (Fc) Specific, Recombinant, Fluorescein	10,000U / 1 mL	K8295	ClonePix

CloneDetect

Detection agents for visualizing secreted antibodies. All products are animal-derived, sterile, and azide free.

Product name and description	Quantity/pack size	Part number	Compatibility
Human			
CloneDetect Human IgG (H+L) Specific, Fluorescein	10,000U / 1 mL	K8200	ClonePix
CloneDetect Human IgG (H+L) Specific, Fluorescein. In atomizer applicator	10,000U / 5 mL	K8201	
CloneDetect Human IgG (H+L) Specific, Fluorescein, BSA Free	10,000U / 1 mL	K8202	
CloneDetect Human IgG (Fc) Specific, Fluorescein	10,000U / 1 mL	K8205	
CloneDetect Human IgG (Fc) Specific, Fluorescein. In atomizer applicator	10,000U / 5 mL	K8206	
CloneDetect Human IgG Specific, 550 Labeled	10,000U / 1 mL	K8210	
CloneDetect Human IgG Specific, 550 Labeled. In atomizer applicator	10,000U / 5 mL	K8211	
CloneDetect Human IgG Specific, 650 Labeled	10,000U / 1 mL	K8212	
CloneDetect Human IgG Specific, 650 Labeled. In atomizer applicator	10,000U / 5 mL	K8213	
CloneDetect Human IgG (H+L) Specific Complex Initiation Factor (CIF)	10,000U / 1 mL	K8215	
CloneDetect Human IgG (Kappa Chain) Specific, 550 Labeled	10,000U / 1 mL	K8250	
CloneDetect Human IgG (Kappa Chain) Specific, 650 Labeled	10,000U / 1 mL	K8251	
CloneDetect Human IgG (Kappa Chain) Specific, Fluorescein	10,000U / 1 mL	K8252	
CloneDetect Human IgM Specific, 550 Labeled	10,000U / 1 mL	K8253	
CloneDetect Human IgM Specific, 650 Labeled	10,000U / 1 mL	K8254	
CloneDetect Human IgM Specific, Fluorescein	10,000U / 1 mL	K8255	
Mouse			
CloneDetect Mouse IgG (H+L) Specific, Fluorescein	10,000U / 1 mL	K8220	ClonePix
CloneDetect Mouse IgG (H+L) Specific, Fluorescein. In atomizer applicator	10,000U / 5 mL	K8221	
CloneDetect Mouse IgG (Fc) Specific, Fluorescein	10,000U / 1 mL	K8225	
CloneDetect Mouse IgG (Fc) Specific, Fluorescein. In atomizer applicator	10,000U / 5 mL	K8226	
CloneDetect Mouse IgG Specific, 550 Labeled	10,000U / 1 mL	K8230	
CloneDetect Mouse IgG Specific, 550 Labeled. In atomizer applicator	10,000U / 5 mL	K8231	
CloneDetect Mouse IgG Specific, 650 Labeled	10,000U / 1 mL	K8232	
CloneDetect Mouse IgG Specific, 650 Labeled. In atomizer applicator	10,000U / 5 mL	K8233	
CloneDetect Mouse IgG (H+L) Specific Complex Initiation Factor (CIF)	10,000U / 1 mL	K8235	
Rat			
CloneDetect Rat IgG (H+L) Specific, Fluorescein	10,000U / 1 mL	K8240	ClonePix
Sheep			
CloneDetect Anti-Sheep IgG (H+L) Specific, sterile, azide-free, fluorescein	10,000U / 1 mL	K8246	ClonePix
CloneDetect Anti-Sheep IgG (H+L) Specific, Complex Initiation Factor (CIF) sterile, azide-free, fluorescein	10,000U / 1 mL	K8247	

Adherent cell picking reagent

Sterile reagents optimized for picking adherent colonies without loss of viability.

Product name and description	Quantity/pack size	Part number	Compatibility
Adherent Cell Picking Reagent. Test Kit. 250 mL each of Types A-D	4 × 250 mL	K8005	ClonePix
Adherent Cell Picking Reagent – Type A (Very Low Stringency)	500 mL	K8010	
Adherent Cell Picking Reagent – Type B (Low Stringency)	500 mL	K8020	
Adherent Cell Picking Reagent – Type C (Medium Stringency)	500 mL	K8030	
Adherent Cell Picking Reagent – Type D (High Stringency)	500 mL	K8040	

Cell-based assay kits

Cell-based assays assess the viability of cells following compound treatment. Optimized for the high sensitivity of CellReporter, the kits can reduce the assay cost per well for toxicity screening.

Product name and description	Quantity/pack size	Part number	Compatibility
Viability Assay Kit. Dual-dye assay utilizing a cytoplasmic, FITC-detectable, live-cell dye to reveal living cells and a DAPI-detectable, all-cell nuclear dye to normalize for cell number	2000 reactions	K7010	CellReporter
Viability Assay Kit. Dual-dye assay utilizing a cytoplasmic, FITC-detectable, live-cell dye to reveal living cells and a DAPI-detectable, all-cell nuclear dye to normalize for cell number	10000 reactions	K7011	
Cytotoxicity Assay Kit. Dual-nuclear dye assay utilizing a TxRED / Cy3-detectable, dead-cell dye to reveal dead cells and a DAPI-detectable, all-cell nuclear dye to normalize for cell number	2000 reactions	K7020	
Cytotoxicity Assay Kit. Dual-nuclear dye assay utilizing a TxRED / Cy3-detectable, dead-cell dye to reveal dead cells and a DAPI-detectable, all-cell nuclear dye to normalize for cell number	10000 reactions	K7021	
Cytotoxicity Assay (mono) Kit. Single-dye assay to determine number of dead cells	2000 reactions	K7030	
Cytotoxicity Assay (mono) Kit. Single-dye assay to determine number of dead cells	10000 reactions	K7031	

Cleaning and sterilizing solutions

Ideally suited to clean instruments and accessories.

Product name and description	Quantity/pack size	Part number	Compatibility
aQu Clean pin cleaning solution, anionic and non-ionic detergent based cleaning solution	1 L	K2505	ClonePix

Calibeads

Fluorescent microspheres for the verification of imaging and picking functions on ClonePix systems. Microspheres fluoresce at four distinct wavelengths corresponding to the CFP, FITC / GFP, Rhodamine / PE and Cy5™ filter sets of ClonePix systems.

Product name and description	Quantity/pack size	Part number	Compatibility
Calibeads: Fluorescent calibration beads for ClonePix. 200 µm diameter. Pan wavelength. Provided ready-to-plate (in 100 mL of semi-solid substrate, ca. 15-25 beads / mL)	100 mL	K8150	ClonePix

QPix Chroma Filter

02



QPix™ Chroma Filters

Thin film optical filters for selection of bacterial colonies with multiple ranges of color intensities. Interchangeable filters last up to 10 uses and improve recognition of colored colonies for accurate picking of desired clones. Compatible with QPix Software Version 2.0 and higher.

Product name and description	Quantity/pack size	Part number	Compatibility
QPix™ Chroma Filter; Thin film optical filter for Blue/White colony selection	1 filter	X1101	QPix 400 Series
QPix™ Chroma Filter; Thin film optical filters for Blue/White colony selection	25 filters	X1102	
QPix™ Chroma Colorimetric Colony Selection Software Kit; Blue/White Colony Selection Software Kit for QPix 400 Series. Includes software license and 2 QPix™ Chroma Filters (X1101)	1 license, 25 filters	X1103	

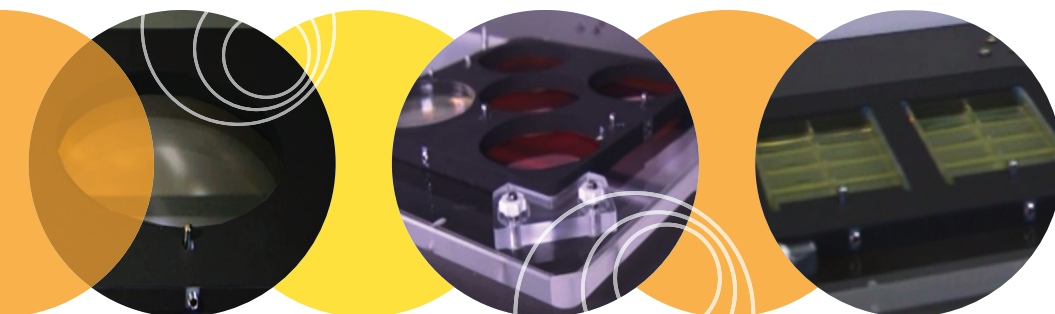
03

Petri dishes and plate holders

Adjustable petri dish and microplate holders

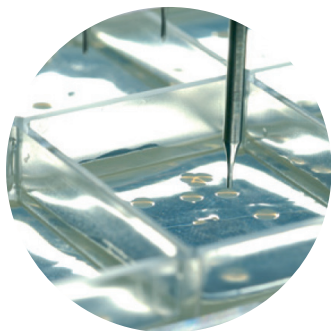
Spring-loaded holders automatically adjust to the perimeter of the plates to ensure secure fit of the plastic ware with a greater size variations. Black finish enhances optical imaging and reduces light scattering. Compatible with QPix Software Version 2.0 and higher.

Product name and description	Plate diameter	Part number	Compatibility
1-Way Adjustable Petri Dish Holder	138–141 mm	X9401	QPix 400 Series
2-Way Adjustable Petri Dish Holder	Any ANSI/SLAS 1-2004 microplates	X9402	
3-Way Adjustable Petri Dish Holder	97–100.5 mm	X9403	
4-Way Adjustable Petri Dish Holder	87– 90.5 mm	X9404	



Bioassay trays

04



Bioassay trays

Ideal for large scale culture and screening of bacterial colonies, regional picking and high throughput protein expression. The vented lid aids removal of condensation. Can be supplied with a 48-well divider to provide a cost effective alternative to petri dishes.

Product name and description	Quantity/pack size	Part number	Compatibility
Vented QTray with cover, polystyrene, 240 x 240 x 20 mm, sterile, packaged in resealable bags of 5	20 per case	X6023	QPix 400 Series
Vented QTray with Lid, polystyrene, magenta, surface area 500 cm ² , sterile, packaged in resealable bags of 10	20 per case	X6025	
48-Well Dividers for QTray, polystyrene, sterile, individually wrapped	20 per case	X6026	
Vented Qtray with cover & 48-Well Divider, polystyrene, 242 x 240 x 20 mm, sterile, packaged in resealable bags of 5	20 per case	X6029	

05

Microplates

A comprehensive range of 96- and 384-well microplates in a variety of profiles and materials.

Low profile microplates

Low profile design maximizes robotic plate stacker volume and storage.
Dimensions: 128 x 86 x 10 mm.



Product name and description	Quantity/pack size	Part number	Compatibility
384-Well Low Profile Microplate, round well, flat bottom, sterile, with cover, working volume 50 µL, packaged in sleeves of 10	160 per case	X6001	QPix 400 Series
384-Well Low Profile Microplate, round well, V-bottom, sterile, with cover. Individually wrapped	160 per case	X6004	
96-Well Low Profile Microplate, polystyrene, round well, flat bottom, sterile, with cover, working volume 180 µL, packaged in sleeves of 10	160 per case	X6011	
384-Well Low Profile, Large Volume Microplate, round well, flat bottom, sterile, with cover, working volume 60 µL, packaged in sleeves of 10	160 per case	X7001	

Standard profile microplates

Polystyrene plates. Dimensions 128 x 86 x 14.5 mm.

Product name and description	Quantity/pack size	Part number	Compatibility
96-Well Standard Profile Microplate, Polystyrene, U-bottom, sterile, working volume 280 µL, packed in sleeves of 2	100 per case	650 161	QPix 400 Series
96-Well Standard Profile Microplate, Polystyrene, Flat bottom, sterile, working volume 340 µL, packed in sleeves of 2	100 per case	655 161	

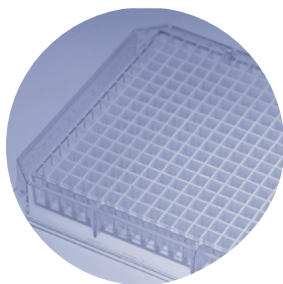
384-well high sample recovery plate

Microplates for applications that require high sample recovery rates. Made from polypropylene with conical well profiles to maximize recovery and allow working with sample volumes as low as 5 µL. The low profile increases robotic stack capacity and storage. Dimensions: 128 x 86 x 10 mm. Working volume: 5-65 µL.

Product name and description	Quantity/pack size	Part number	Compatibility
384-Well High Sample Recovery Plate, polypropylene, without cover, working volume 5-65 µL, packaged in sleeves of 10	200 per case	X7020	QPix 400 Series
384-Well High Sample Recovery Plate Plate, polypropylene, with cover, working volume 5-65 µL, packaged in sleeves of 10	200 per case	X7022	

Deep well plates and lids

06



Deep well plates

Polypropylene deep well plates with elevated well walls for easier sealing. Conform to SBS standards.

Product name and description	Quantity/pack size	Part number	Compatibility
96 Deep Round Well Plate, round bottom, working volume 600 μ L, packed in sleeves of 6	24 plates per case	S1201	QPix 400 Series
96 Deep Square Well Plate, round bottom, working volume 2000 μ L, packed in sleeves of 6	24 plates per case	S1205	
384 Deep Square Well Plate, round bottom, working volume 400 μ L, packed in sleeves of 6	24 plates per case	S1207	
384 Deep Square Well Plate, flat bottom, working volume 120 μ L, packed in sleeves of 6	24 plates per case	S1209	
384 Deep Square Well Plate, round bottom, working volume 200 μ L, packed in sleeves of 6	24 plates per case	S1210	
24 Deep Well plate, polypropylene, square well, conical bottom, working volume 10 mL	25 plates per case	X7060	

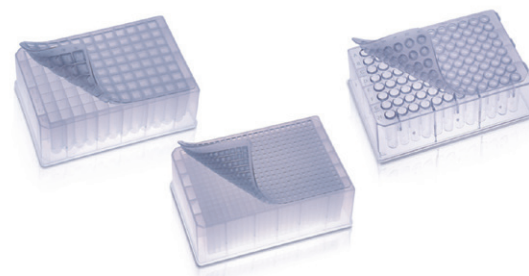
Cap mats and lids

QLid is a rigid polystyrene, close fitting lid. Cap mats are made from specially formulated plastic to ensure flexibility.

Product name and description	Quantity/pack size	Part number	Compatibility
QLid, sterile, packed in sleeves of 10: fits S1205, S1207, S1210, S1209, X7020, X1535 and X1537	240 lids per case	X5101	QPix 400 Series
Cap Mats for 1.2 mL 96-Well Plates (S1203)	24 mats per case	S1211	
Cap Mats for 2.0 mL 96-Well Plates (S1205)	24 mats per case	S1212	

Breathe Seal

Porous film for sealing culture plates where air and gas exchange is necessary. The 114 µm thick film is easily pierced by pipette tips. Recommended for temperatures between -20 to +80°C.



Product name and description	Quantity/pack size	Part number
Breathe Seal for cell and tissue culture, non-sterile	100 seals per pack	E1004
Breathe Seal for cell and tissue culture, sterile, packed in tamper proof bags of 25	50 seals per pack	E1005

Foil Seal for microplates

Soft, non-permeable aluminum foil film. Easily pierced by pipette tips or robotic probes. Certified DNase- RNase- and nucleic acid free. Recommended for temperatures between -80 to +120°C.

Product name and description	Quantity/pack size	Part number
Foil Seal for cold storage and PCR, non-sterile	100 seals per pack	E1006
Foil Seal for cold storage and PCR, sterile, packed in bags of 25	50 seals per pack	E1007

Heat sealing film and rolls

Clear seals to allow observation of samples. Available in precut sheets or as rolls for automatic sealers.

Product name and description	Quantity/pack size	Part number
Heat Seal Roll Adhesive, non-sterile, 130 mm width, 250 m length	1 roll	X5150
Heat Seal Roll, non-sterile, 140 mm width, 450 m length	1 roll	X5152
Heat Seal Roll, non-sterile, 116 mm width, 450 m length	1 roll	X5153

ELISA Seal

Securely seals wells to eliminate ridge effects in ELISA assays. Only 1 mm thick to allow piercing with single channel pipettes. Recommended for temperatures between -40 to +120°C.

Product name and description	Quantity/pack size	Part number
ELISA Seal, 2 mm thick, non-sterile	1100 seals per pack	E1008

Replicators and filters

08



QReps polypropylene replicators

Increase processing speed by eliminating flaming and washing using these chemically resistant replicators.

Product name and description	Quantity/pack size	Part number	Compatibility
QRep 384 Pin Replicators: polypropylene, 10 mm length (low profile plates), 1 mm diameter	2 × 64	X5050	QPix 400 Series
QRep 96 Pin Replicators: polypropylene, 10 mm length (low profile plates), 1 mm diameter	2 × 64	X5051	
QRep 96 Pin Replicators: polypropylene, 10 mm length (low profile plates), 2 mm diameter	2 × 64	X5052	
QRep 384 Pin Replicators: polypropylene, 15 mm length (standard profile plates), 1 mm diameter	2 × 56	X5053	
QRep 96 Pin Replicators: polypropylene, 15 mm length (standard profile plates), 1 mm diameter	2 × 56	X5054	



Filters and filter paper

Performa II nylon filters are sensitive down to 0.25 pg of DNA with low intrinsic fluorescence for high signal to noise ratio and can be successfully stripped and reprobed without loss of signal intensity. Promotes well-defined colony growth on high density arrays that can reduce incubation time by 4-5 hours.

Product name and description	Quantity/pack size	Part number	Compatibility
Performa II Nylon Filters: 222 × 222 mm for use with Qtray	60 filters	N3010	QPix 400 Series
Performa II Nylon Filters: 128 × 86 mm for use with OmniTray	100 filters	N3020	

HalfSEQ DNA sequencing dilution reagents

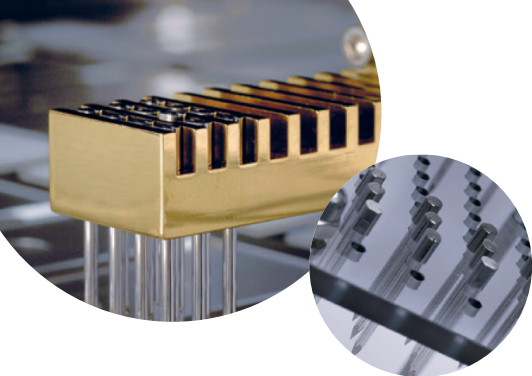
Save up to 90% on sequencing costs by replacing expensive sequencing mix with *HalfSEQ* reagents. Mix in a ratio of 1:1 or higher. Stabilizing ingredients allow pre-aliquoting and batch storage.

Product name and description	Quantity/pack size	Part number
<i>HalfBD™</i> , ABI BigDye®	0.8 mL	K1102
<i>HalfBD™</i> , ABI BigDye®	2 × 0.8. mL	K1104
<i>HalfBD™</i> , ABI BigDye®	5 × 0.8 mL	K1110
<i>HalfBD™</i> , ABI BigDye®	1 × 20 mL	K1115
<i>HalfTSII</i> , Amersham DYEnamic™, ET-Thermosequenase™(GE)	0.8 mL	K1162
<i>HalfTSII</i> , Amersham DYEnamic™, ET-Thermosequenase™(GE)	2 × 0.8. mL	K1164
<i>HalfTSII</i> , Amersham DYEnamic™, ET-Thermosequenase™(GE)	5 × 0.8 mL	K1170
<i>HalfTSII</i> , Amersham DYEnamic™, ET-Thermosequenase™(GE)	1 × 20 mL	K1175
<i>HalfCEQ</i> , Beckman CEQ DTCS	0.8 mL	K1182
<i>HalfCEQ</i> , Beckman CEQ DTCS	2 × 0.8. mL	K1184
<i>HalfCEQ</i> , Beckman CEQ DTCS	5 × 0.8 mL	K1190
<i>HalfCEQ</i> , Beckman CEQ DTCS	1 × 20 mL	K1195
<i>HalfBD™</i> v3.1, ABI BigDye® v3.1	0.8 mL	K1500
<i>HalfBD™</i> v3.1, ABI BigDye® v3.1	2 × 0.8. mL	K1502
<i>HalfBD™</i> v3.1, ABI BigDye® v3.1	5 × 0.8 mL	K1504
<i>HalfBD™</i> v3.1, ABI BigDye® v3.1	1 × 20 mL	K1506

genCLEAN dye terminator clean-up kits

Fast removal of excess dye terminator before DNA sequencing with increased read-length and better accuracy. Easy to use and 4-5 times faster than EtOH precipitation method.

Product name and description	Quantity/pack size	Part number
genCLEAN Dye Terminator Clean-Up Kit, individual columns	50 columns	K1000
genCLEAN Dye Terminator Clean-Up Kit, individual columns	250 columns	K1005
genCLEAN Dye Terminator Clean-Up Kit, 96-well format	1 plate	K1010
genCLEAN Dye Terminator Clean-Up Kit, 96-well format	10 plates	K1015
genCLEAN Dye Terminator Clean-Up Kit, 96-well + Applied Biosystems Collection Plates	10 plates	K1016



Microarraying

10

TeleChem ArrayIt® Stealth pins and accessories

A range of solid and split pins Compatibility TeleChem ArrayIt® Stealth print heads. The Stealth print head holds up to 48 stainless steel pins.

Product name and description	Quantity/pack size	Part number
Stand for Microarray Pins	1 stand	X2760
TeleChem ArrayIt® 946 Pin, Split-946 pin type, tip diameter 50 µm	1 pin	X946MP2
TeleChem ArrayIt® 946 Pin, Split-946 pin type, tip diameter 65 µm	1 pin	X946MP2.5
TeleChem ArrayIt® 946 Pin, Split-946 pin type, tip diameter 75 µm	1 pin	X946MP3
TeleChem ArrayIt® 946 Pin, Split-946 pin type, tip diameter 100 µm	1 pin	X946MP4
TeleChem ArrayIt® 946 Pin, Split-946 pin type, tip diameter 125 µm	1 pin	X946MP5
TeleChem ArrayIt® 946 Pin, Split-946 pin type, tip diameter 150 µm	1 pin	X946MP6
TeleChem ArrayIt® Stealth Pin, Split-Stealth pin type, tip diameter 250 µm	1 pin	XSMP10
TeleChem ArrayIt® Stealth Pin, Split-Stealth pin type, tip diameter 50 µm	1 pin	XSMP2
TeleChem ArrayIt® Stealth Pin, Split-Stealth pin type, tip diameter 65 µm	1 pin	XSMP2.5
TeleChem ArrayIt® Stealth Pin, Split-Stealth pin type, tip diameter 75 µm	1 pin	XSMP3
TeleChem ArrayIt® Stealth Pin, Split-Stealth pin type, tip diameter 100 µm	1 pin	XSMP4
TeleChem ArrayIt® Stealth Pin, Split-Stealth pin type, tip diameter 125 µm	1 pin	XSMP5
TeleChem ArrayIt® Stealth Pin, Split-Stealth pin type, tip diameter 150 µm	1 pin	XSMP6
TeleChem ArrayIt® Stealth Pin, Split-Stealth pin type, tip diameter 175 µm	1 pin	XSMP7
TeleChem ArrayIt® Stealth Pin, Split-Stealth pin type, tip diameter 200 µm	1 pin	XSMP8
TeleChem ArrayIt® Stealth Pin, Solid pin type, tip diameter 250 µm	1 pin	XSNS10
TeleChem ArrayIt® Stealth Pin, Solid pin type, tip diameter 300 µm	1 pin	XSNS12
TeleChem ArrayIt® Stealth Pin, Solid pin type, tip diameter 375 µm	1 pin	XSNS15
TeleChem ArrayIt® Stealth Pin, Solid pin type, tip diameter 75 µm	1 pin	XSNS3
TeleChem ArrayIt® Stealth Pin, Solid pin type, tip diameter 100 µm	1 pin	XSNS4
TeleChem ArrayIt® Stealth Pin, Solid pin type, tip diameter 150 µm	1 pin	XSNS6
TeleChem ArrayIt® Stealth Pin, Solid pin type, tip diameter 200 µm	1 pin	XSNS8
TeleChem 48-pin head for QArray2	1 head	GSPH48QA2
TeleChem 48-pin head for QArrayMini	1 head	GSPH48QAM

10 Microarraying

Glass slides

A range of glass slides for microarraying

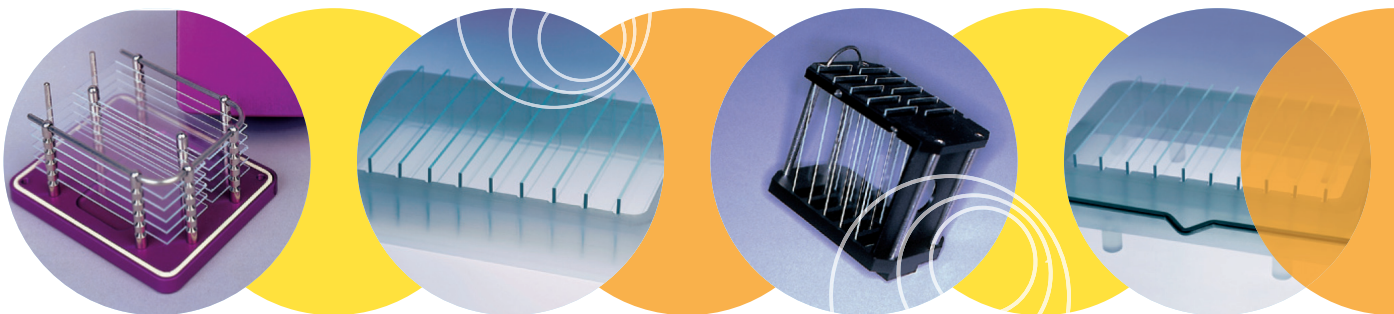
- Amine coated for non-modified DNA spotting
- Aldehyde coated for modified DNA spotting
- Aldehyde Plus for higher signal to noise ratio
- Epoxy coated for DNA and protein spotting.

Product name and description	Quantity/pack size	Part number
Aldehyde plus slides	1 × 25 slides	K2080
Amine coated slides	1 × 25 slides	K2615
Aldehyde coated slides	1 × 25 slides	K2625
Epoxy Slides	1 × 25 slides	K2652
Aldehyde coated slides, clear (non-frosted end)	1 × 25 slides	K2625C

Microarraying accessories

A range of products for cleaning, drying, storing, transporting and hybridizing slides.

Product name and description	Quantity/pack size	Part number
aQu Clean – pin cleaning solution	1 L	K2505
Microarray Slide Dryer, 10 slide capacity	2 slide dryers	X2510
Blotting Paper for Microarray Slide Dryer	Pack of 25	X2515
Microarray Slide Washer, 10 slide capacity, fits into 1 L beaker (not supplied)	1 slide washer	X2520
Hybridization Chamber, 10 slide capacity	1 chamber	X2530
Hybridization Chamber, 20 slide capacity	1 chamber	X2531
Slide Processing Rack, 10 slide capacity	1 rack	X2540



Accessories

11

Product name and description	Quantity/pack size	Part number	Compatibility
130 µL ART pipette tips	10 packs	T0130	QPix 400 Series
Glass plating beads, 6 mm	500 3 bags	X5200	





Contact Us

Phone: [800.635.5577](tel:800.635.5577)
Web: www.moleculardevices.com
Email: info@moldev.com

Check our website for a current listing
of worldwide distributors

Regional Offices

USA and Canada
[+1.800.635.5577](tel:+1800.635.5577)
United Kingdom
[+44.118.944.8000](tel:+44.118.944.8000)
Europe*
[00800.665.32860](tel:00800.665.32860)

China (Beijing)
[+86.10.6410.8669](tel:+86.10.6410.8669)
China (Shanghai)
[+86.21.3372.1088](tel:+86.21.3372.1088)
Hong Kong
[+852.2248.6000](tel:+852.2248.6000)

Japan (Osaka)
[+81.6.7174.8331](tel:+81.6.7174.8331)
Japan (Tokyo)
[+81.3.6362.5260](tel:+81.3.6362.5260)
South Korea
[+82.2.3471.9531](tel:+82.2.3471.9531)

Brazil
[+55.11.3616.6607](tel:+55.11.3616.6607)

*Austria, Belgium, Denmark, Finland, France, Germany, Ireland, Netherlands, Spain, Sweden and Switzerland